

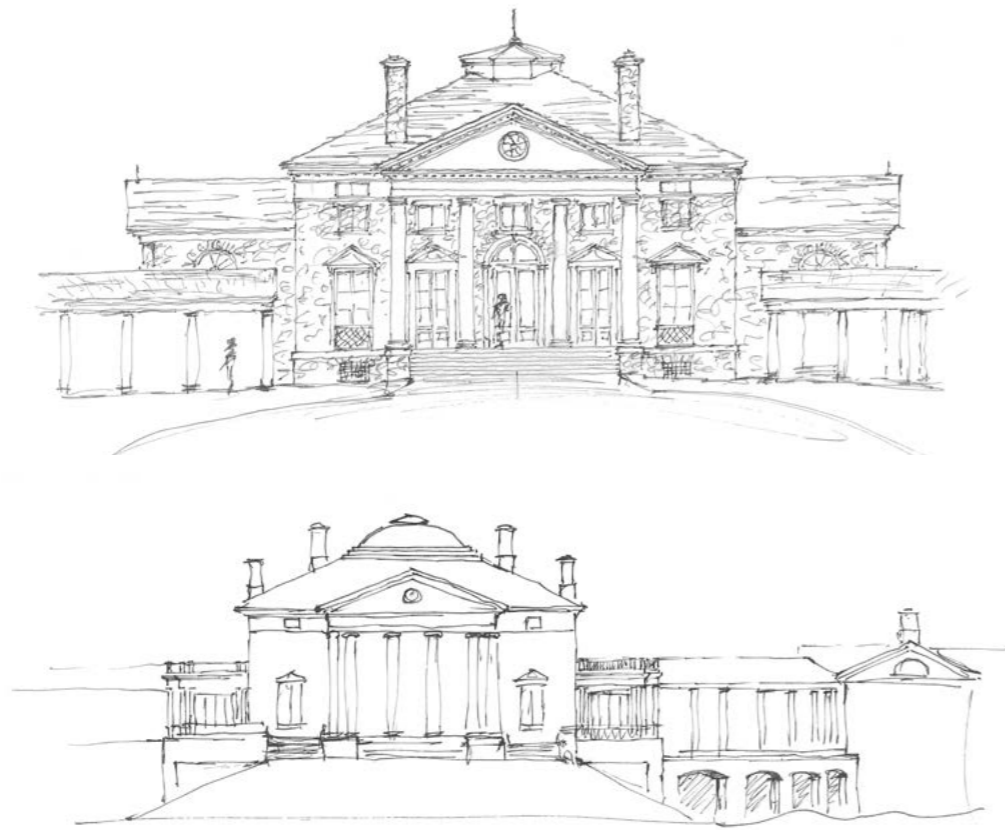


FREEDOM TO CREATE

V HOUSE
ALBEMARLE COUNTY -VA

FEB 2017
BROMBAL MAG #05

IDEA



V House is the fulfillment of the owner's lifelong dream of building a Palladian villa. The residence comprises three buildings joined by curved colonnades, a classical design that brings human scale to a large home and connects the buildings to the landscape. The five-part composition allows abundant daylight in every room and capitalizes on magnificent views to the south, west and north.

Landscaping ties the house to the setting and provides a multi-level progression from the entry courtyard to the west lawn that features stone walls, terraced gardens, fountain, pool, and sculpture.

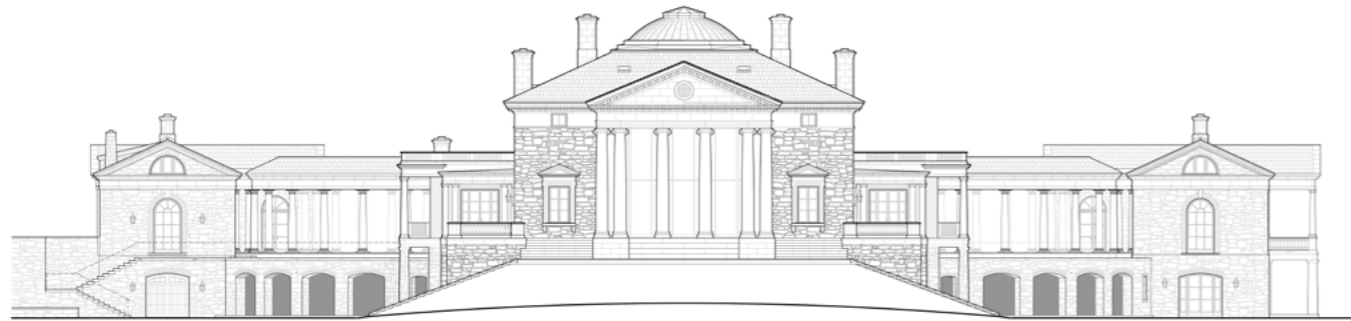
Dalglish Gilpin Paxton



REALIZATION

SUSTAINABLE AND ENERGY EFFICIENT HOME BUILT TO LAST FOR THREE HUNDRED YEARS

The materials and construction methods employed at V House respond to the owners' request that it be built to last for three hundred years. The exterior material palette includes slate roofing, stainless steel flashing, 6" stone veneer and customized Italian bronze windows and doors from Brombal. The entablature, columns, pediments, balustrades and window/door surrounds are all executed in Indiana limestone. The paving materials are Pennsylvania bluestone, hand-moulded brick and sandstone cobbles. Exterior wood is used sparingly and limited to garage doors, several entry doors protected by arcades, and ceilings of the colonnades and entry portico. Enduring materials: thermally-broken bronze windows and doors, reclaimed wood on the interiors, foam insulation, and geo-thermal heating and cooling make the project very energy efficient and sustainable.

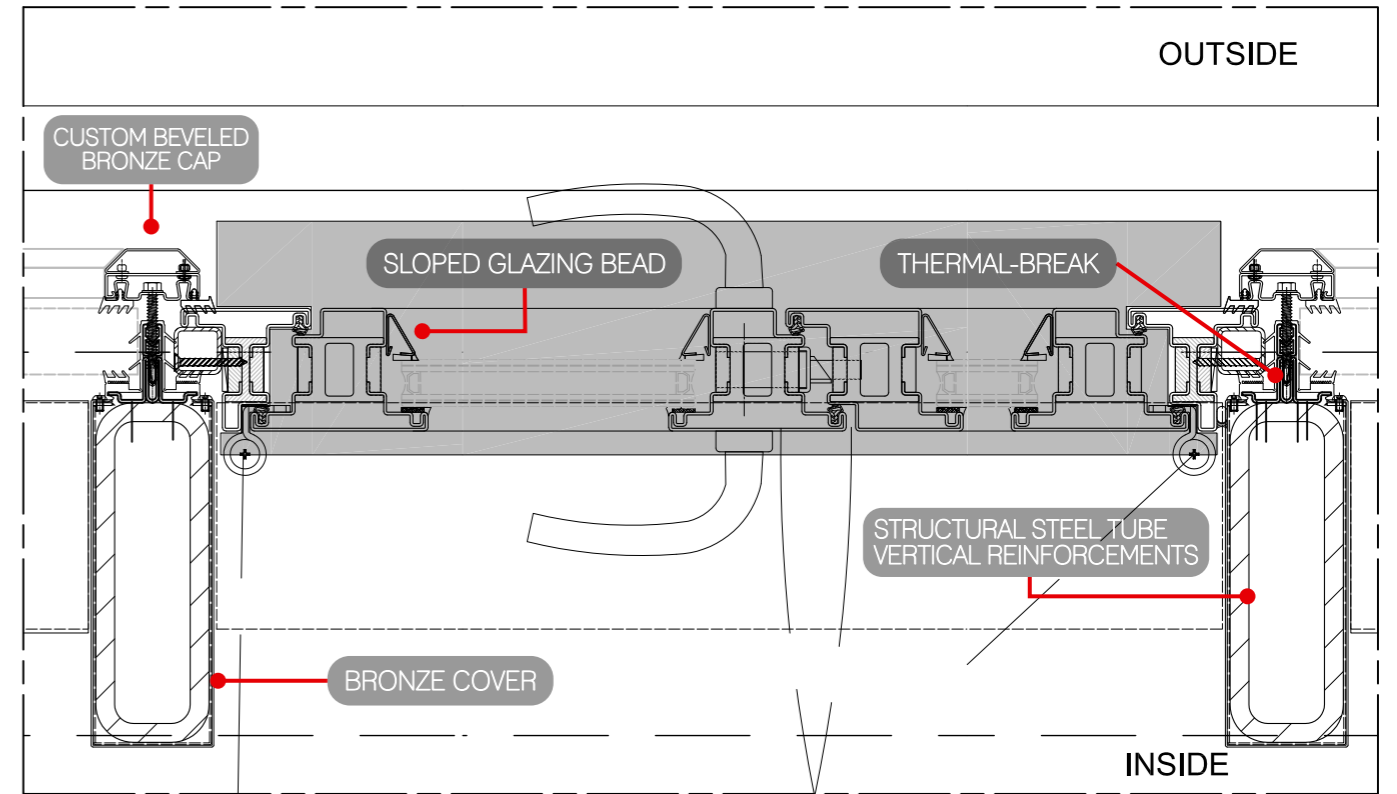




FREEDOM
TO CREATE



FREEDOM TO CREATE



Horizontal Section

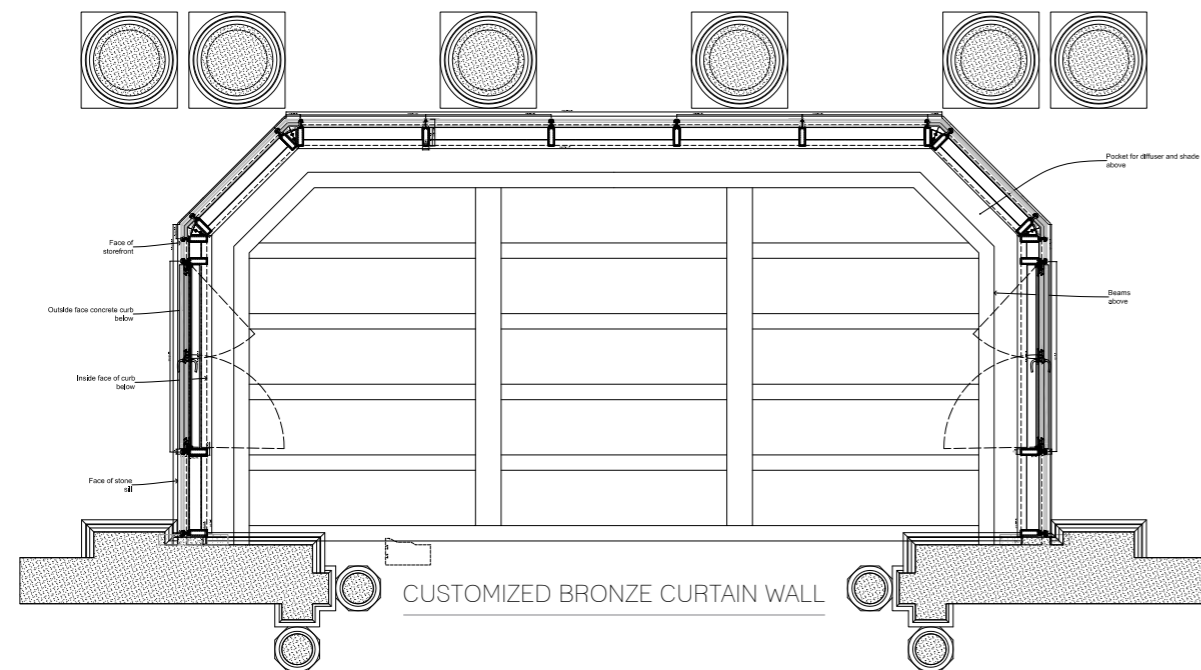
SECTION OF BRONZE CURTAIN WALL

This 2-story sunroom was created with our exclusive Termica thermally broken, steel curtain wall system. The profiles were then clad with custom formed Bronze sheef in order to match the burnished Bronze windows and doors throughout the project. A custom beveled Bronze exterior cover was also created to match the sloped glazing beads.

In order to satisfy the specific wind load and structural requirements for this jobsite, structural steel tube reinforcement was inserted into the profiles. It's this type of customization and level of detail that sets Brombal apart from other manufacturers and allows the architects and clients the "Freedom to Create" and turn their visions into a reality.



CUSTOMIZED BRONZE
RADIUS LOUVERS



CUSTOMIZED BRONZE CURTAIN WALL

TESTIMONIAL

"Our client directed us to build an energy efficient and low maintenance house that would last for 300 years. Brombal's thermally broken, bronze product with minimal sightlines uniquely met these requirements. In addition, Brombal's team was extremely willing to work with us to extend the use of bronze on other exterior opening details, such as louvers, shutters, and curtain wall glazing".

Bob Paxton - Principal
Dalglish Gilpin Paxton Architects



PROJECT TEAM

ARCHITECTURE:

Dalgliesh Gilpin Paxton Architects
John (Jay) D. Dalgliesh, Jr. AIA
Robert L. Paxton AIA
Mark T. Bittle AIA
206 Fifth Street NE
Charlottesville, Virginia 22902

Jonathan Lee Architects
Jonathan Lee
6 Pennsylvania Plaza
Petoskey, MI 49770

BUILDER

Alterra Construction Management
Jeffrey D. Smith
640 Arrowhead Drive
Earlysville, VA 22936

INTERIOR DESIGN

Dalgliesh Gilpin Paxton Architects
R. David Craig
06 5th St NE,
Charlottesville, VA 22902

PHOTOGRAPHER

Gordon Beall Photo
4513 Roxbury Drive
Bethesda, MD 20814

DEALER

STEEL WINDOWS AND DOORS
690 Surf Avenue
Stratford, CT 06615

BROMBAL

LUXURY METAL WINDOWS AND DOORS

BROMBAL Srl

Via Vallà 24 - Caselle di Altivole (TV) ITALY
Phone: +39 0423 566189
www.brombal.it

BROMBAL USA

690 Surf ave - Stratford, CT 06615
Phone: +1 (203) 579-5157
www.brombalusa.com

BROMBAL OCEANIA Ltd

PO Box 47286 - Ponsonby
Auckland - New Zealand
Phone: +64 22 1262814
www.brombaloceania.com

FOLLOW US ON:

